

2the pointe



NEWSLETTER

2008 TERM 1 - ISSUE 4

Welcome

Hi everyone and welcome to Term One at Pointe2Pointe! A special "welcome" to new students joining us for the first time 2008!

Wow! First term promises to be an exciting, and most likely hectic ten weeks but then again, here at Pointe2Pointe we wouldn't have it any other way!

We have already started preparing routines in our classes. Members of the Performance Company have been hard at work learning and perfecting all their solos, duos, trios and troupes for the Eisteddfods. We are eagerly awaiting the first fabulous Pointe2Pointe workshop for the year and before you know it, it will be time for our first social event where we'll get to catch up with all our new and existing students and get to meet the families of our new students. Read on to find out more about what we have planned...

Here's to fabulous Term One at Pointe2Pointe - we're looking forward to working with you!

Miss Natalie and Sally

2007 Annual Concert



"The Search for the Sugar Plum Fairy and Other Fabulous Treasures"

What a show!! Last December, our students put on the most wonderful show for their families and friends. The performance showcased the talents of all of our students - from our adorable two year old Tiny Tots to our energetic more mature-aged Adults!

A **HUGE CONGRATULATIONS** to all students on their amazing performances and their hard work preparing, learning and perfecting their dances. Each and every performance was an extraordinary achievement and a testament to the student's commitment and dedication.

The audience *ooo'd* and *ahh'd* over our gorgeous "summer fairy" Tiny Tots, clapped and cheered along with our incredibly cute "boot-scootin' baby" Primary class, giggled at our "heffalump and woozle" Juniors, got down and funky with our hip hopping Intermediates, marvelled at the incredible



skills of our Seniors and got their toes tapping along with our impressive Adults.

We would also like to say **THANK YOU** to those very special people who dedicated lots of time and effort, not to mention quite probably some blood, sweat and tears, into making and decorating costumes, designing and constructing props, baking yummy treats for interval, assisting backstage, running the front of house, sponsoring our lucky door prize, taking the most beautiful photos of our students and filming the show so our memories will last a lifetime! Thanks again - we couldn't have done it without you!

There are so many great memories from the concert - we hope you had as much fun as we did. Enjoy just a few of the highlights...



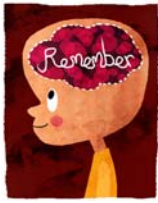
Mandi as "the Sugar Plum Fairy" and Rachel as "Clara"



Miss Ellesse & our Tiny Tots "Wanna be Like You"



Laura, Rachel & Jess in "Heffalumps & Woozles"



Don't forget...

The stunning photos taken at the studio and at the performance are still available – please contact **Annette and Tim** at **Blue Fence Events** on **0412 101543** or check

them out on the web: www.bluefenceevents.com (user name “pointe” and password “pointe2007”).

-  DVDs are also still available – isn't it a great watch!
-  We have a couple of DVDs for sale so just have a chat to one of the Directors.

Upcoming Events

Eisteddfods

Performance Company students will be attending a local Canberra eisteddfod this term. We encourage you all to attend to support our participating students, not to mention, have a great time!

- ρ **Riverside Dance Festival** occurs during the first week of the school holidays - **12 to 16 April 2008**. Check the notice boards closer to the date for location details and run sheets.

“**BREAK A LEG**” girls – we know you'll be fabulous and have a FANTASTIC time!

“Fairy Stories” Workshop

We will host our first workshop for the year on **Sunday 13 April**. These workshops are specially designed for students and their friends between the ages of 3 and 12. The “*Fairy Stories*” workshop will introduce the children to story dance and encourage them to express themselves creatively and imaginatively through a medium everyone loves – fairies! With stories, music, craft activities and a treat or two, the children are bound to have a great time – and the Mums and Dad's can have a morning off too! It is also a great opportunity for our younger students to get to know our older students. We hope to see all the children and their friends there! **REMEMBER** to register your place – if you've lost your note just see one of the Directors.



End of Term One Social Event



Love to dance? Love to party? Then you simply cannot miss the one and only Pointe2Pointe “**Bring-a-Friend Disco**” on **Sunday 13 April** (after the workshop).

With great music, games, yummy snacks, dancing competitions and prizes galore, you just have to be there to shake your groove thing!! Look out for your information note this week.

2008 Annual Concert

We are currently in the process of scheduling our annual concert. We don't have a firm date at this stage but it will definitely be in early December – either the first or the second weekend of the month. Stay tuned for more info shortly...



Reminders



Please take note of the following reminders. If you have any questions, please let us know.

Payment of Fees

Payment of Term One fees was due on Saturday 23 February 2008. Unless you are in the process of making instalment payments, your fees should have been paid in full. If you are experiencing difficulties, please see one of the Directors. This applies to all students – new or old!

Dress Code

Our dress code is detailed in the 2008 Information Pack (*if you don't have a copy yet please let us know*).

A few simple things to remember:

- ρ Pointe2Pointe uniform colours are **Black & White**
- ρ Wear the appropriate attire and footwear
- ρ Hair must be tied back off the face
- ρ **NO makeup** and **NO jewellery**

If you have any questions or concerns, just let us know.

Bring a Drink and Snack



Although winter is on the way and the temperature is dropping, it is still very important to remain hydrated. Please **always** bring a water bottle to class with you – whether you're 3 or 63, it's an important health factor! It's also important to keep up your energy – especially in classes that run for longer than 1.5 hours. Please feel free to bring small, healthy snacks (*dried fruit, muesli bars, etc.*) to replenish your energy!



Pointe2Pointe Web Site (www.pointe2pointe.com.au)

A quick reminder that we re-launched our web site in January. Event information, forms, timetables etc. are updated regularly. **REMEMBER** to check the site (and our notice boards) regularly for updates!!

Natalie Pearse & Sally Pinder | Pointe2Pointe Dancers ACT
PO Box 1157 Civic Square ACT 2608
M: 0405 620 582 | E: admin@pointe2pointe.com.au
www.pointe2pointe.com.au